

Figure 7. Water Management Features from 1st edition OS maps (detail of western area: IW024-IW028)

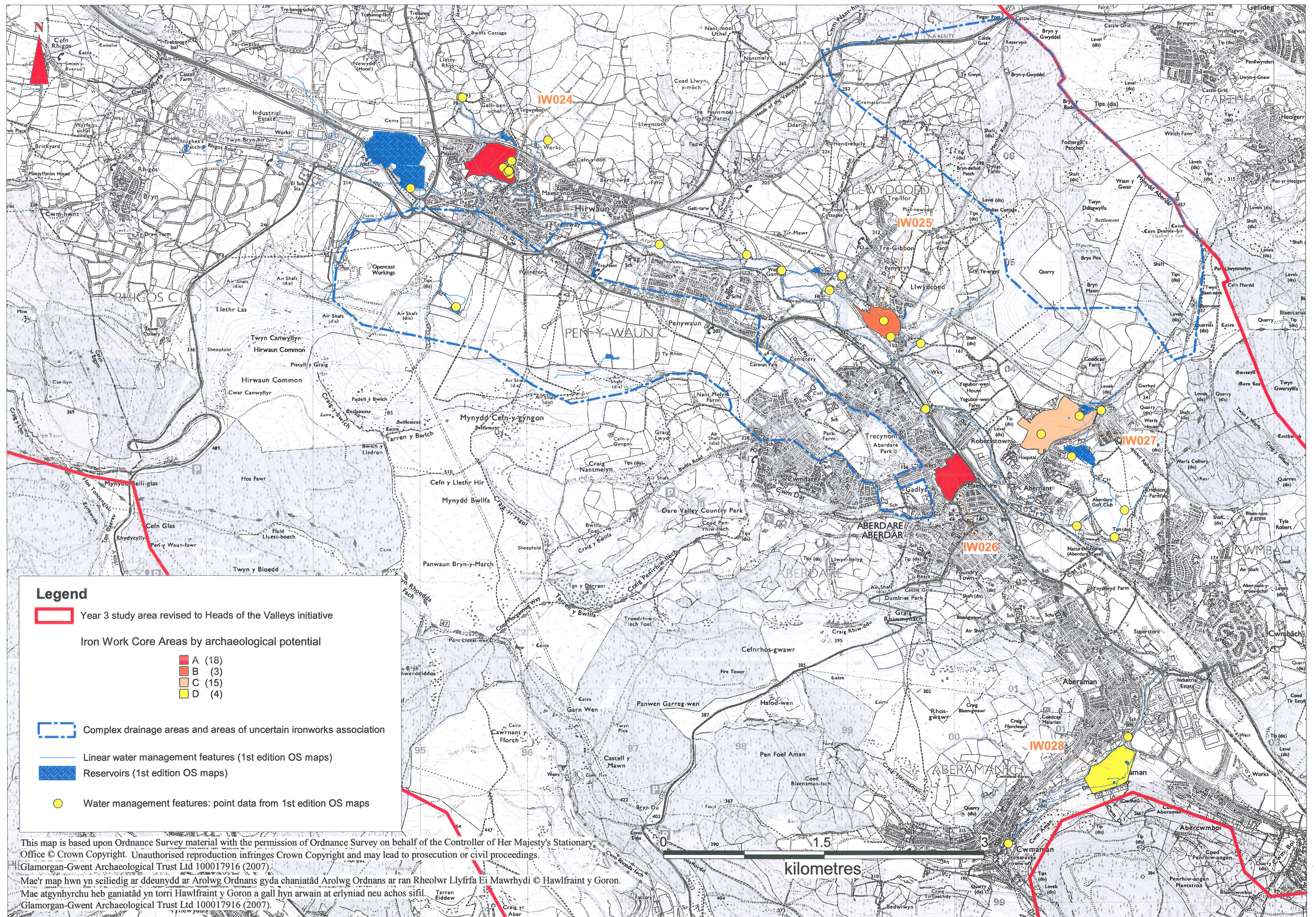


Figure 8. Water Management Features from 1st edition OS maps (detail of eastern area: IW010a-IW015a)

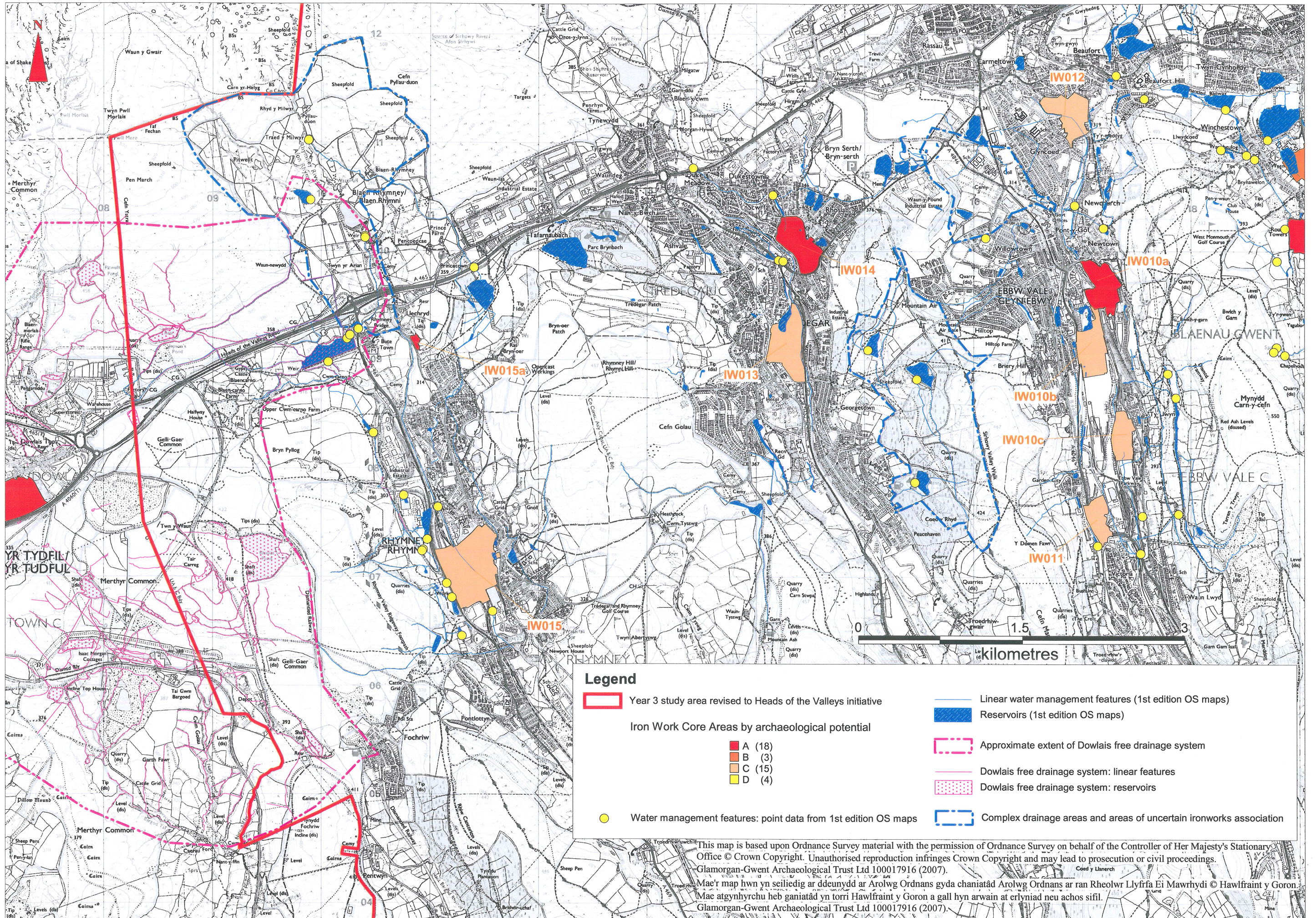


Figure 9. Water Management Features from 1st edition OS maps (detail of eastern area: IW007-IW012)

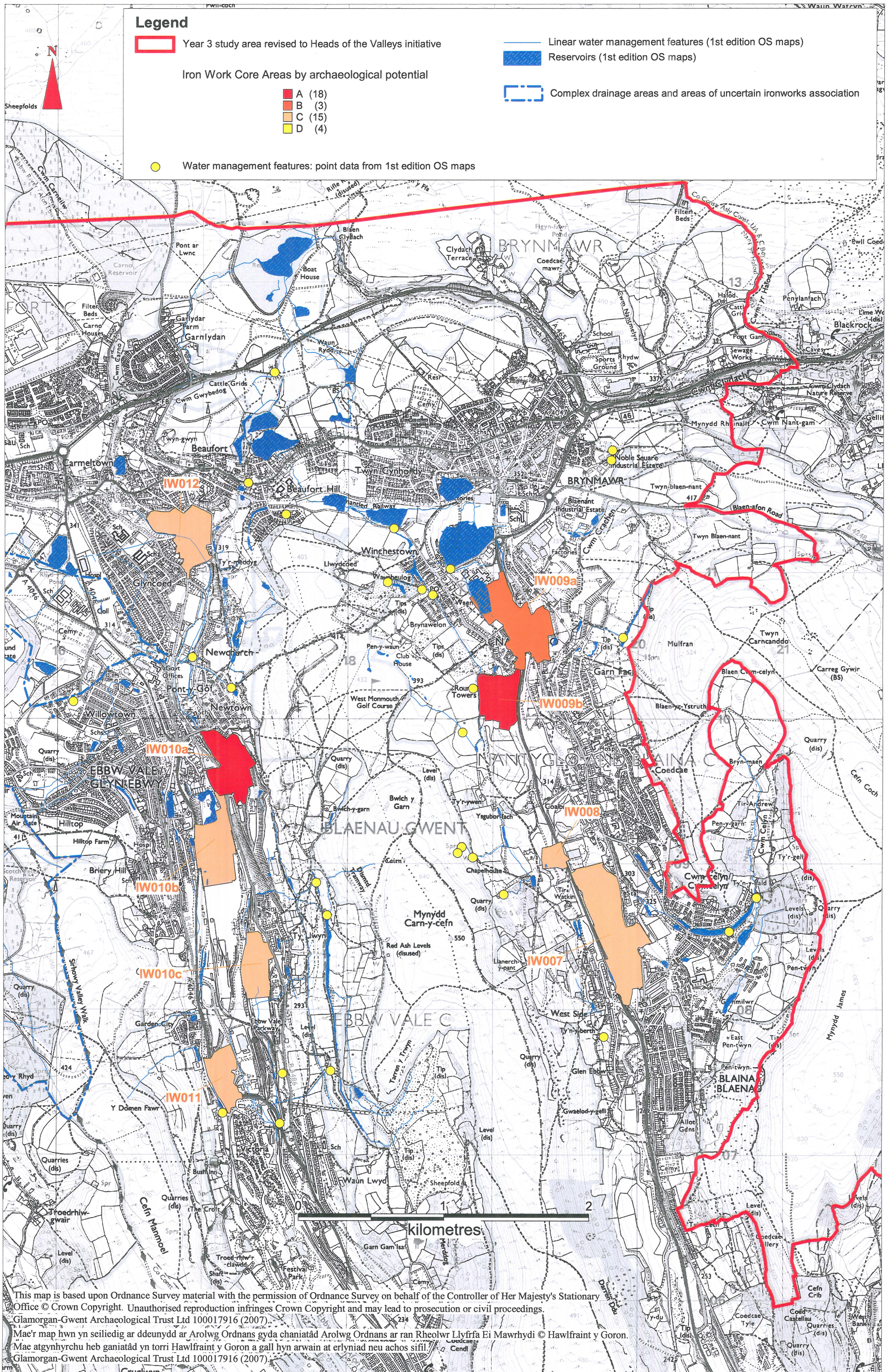


Figure 10. Water Management Features from 1st edition OS maps (detail of eastern area: IW002-IW005)

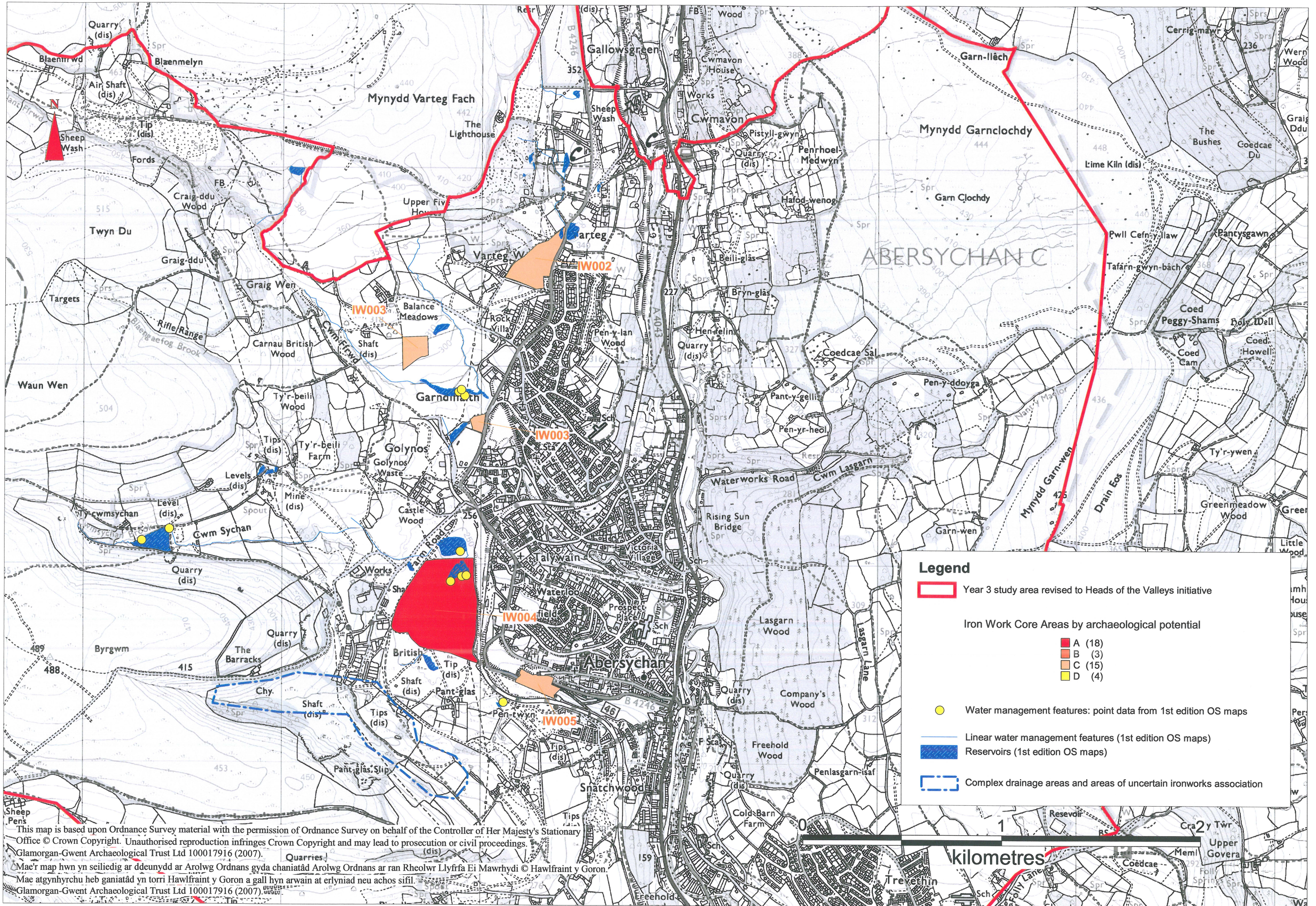
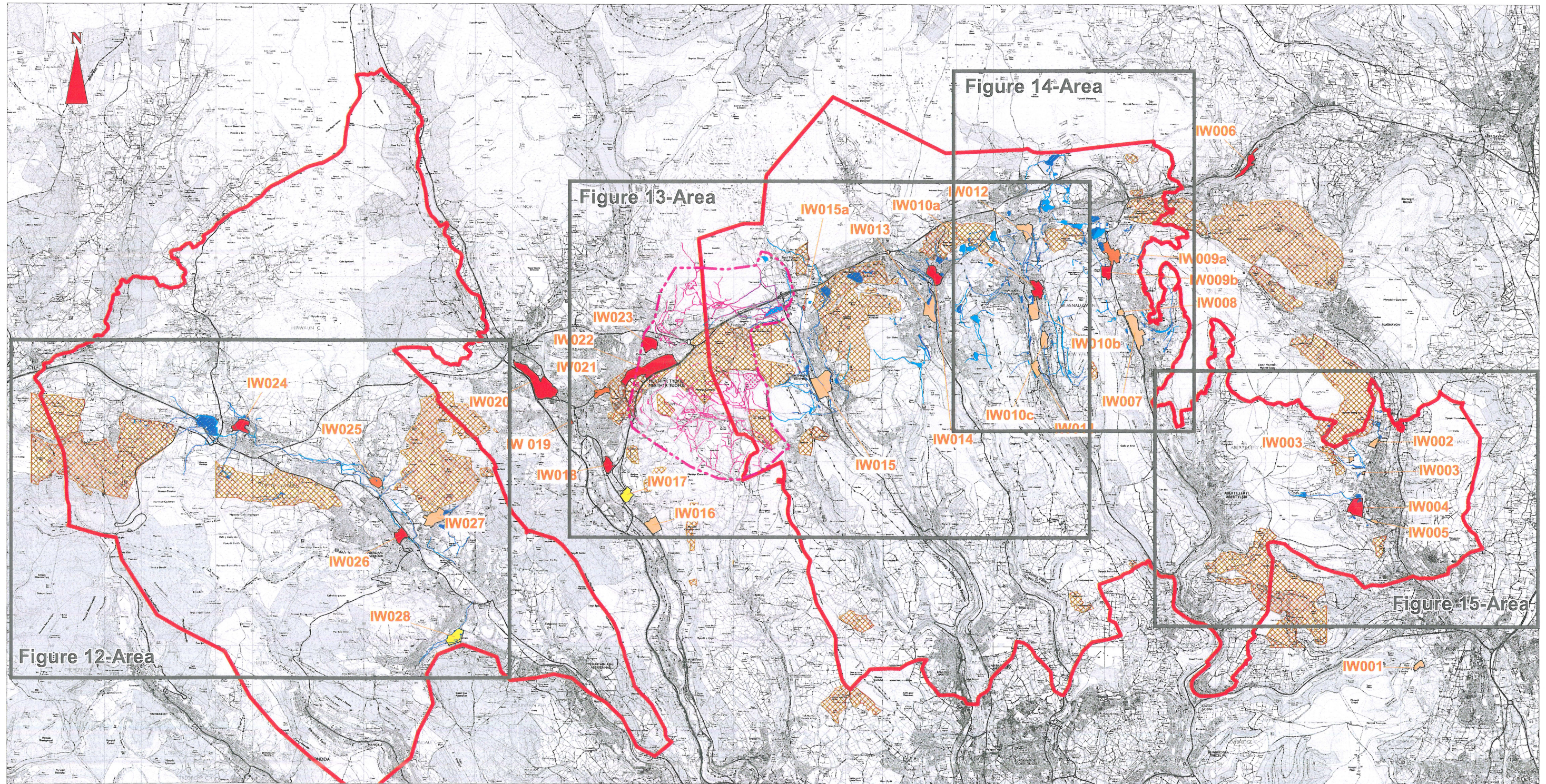


Figure 11. Water Management Features Surviving



Legend

- Year 3 study area revised to Heads of the Valleys initiative
- Linear water management features (1st edition OS maps)
- Reservoirs (1st edition OS maps)
- Approximate extent of Dowlais free drainage system
- Dowlais free drainage system: linear features
- Dowlais free drainage system: reservoirs
- Opencast areas
- Surviving linear water management features
- Surviving water management features: reservoirs
- Possible surviving linear water management features
- Possible surviving water management features: reservoirs

- A (18)
- B (3)
- C (15)
- D (4)

This map is based upon Ordnance Survey material with the permission of Ordnance Survey on behalf of the Controller of Her Majesty's Stationary Office © Crown Copyright. Unauthorised reproduction infringes Crown Copyright and may lead to prosecution or civil proceedings. Glamorgan-Gwent Archaeological Trust Ltd 100017916 (2007).
 Mae'r map hwn yn seiliedig ar ddeunydd ar Arolwg Ordnans gyda chaniatâd Arolwg Ordnans ar ran Rheolwr Llyfrfa Ei Mawrhydi © Hawlfraint y Goron. Mae atgynhyrchu heb ganiatâd yn torri Hawlfraint y Goron a gall hyn arwain at erlyniad neu achos sifil. Glamorgan-Gwent Archaeological Trust Ltd 100017916 (2007).